



The inscription on the front of the gate dates 1648 and records the building of the doorway by Conor O'Brien and Mary McMahon his wife, she was daughter of Sir Turlough McMahon and is well known in legends as Maire Rua.

The red brick walled garden is divided into three sections, the walls of the first and second walled gardens are thought to date from the time of Queen Anne (1702 -1714) and the orchard section is thought to be Elizabethan (1558 – 1603).



Observe the linear water feature as you walk through the first walled garden. In the middle of the garden note the Dromoland Rose bed next to the sundial Lord Inchiquin designed for the garden, engraved around the dial are the words 'Not night but day abide, and as time's shadows earthwards cast light upon the other side not grief but joy remain'. The Lady Inchiquin was honoured by having the "Lady Ethel" pink climbing rose on the garden wall named after her. Fig trees also grow against the garden walls lending their name to the golf clubhouse restaurant.

In the second Walled Garden note two specific areas that have been planted with butterfly and bumblebee loving plants. One of the original three sunken and stove heated glasshouses remains intact. Still used today we grow vines, tomatoes, basil and cucumbers for use in the Fig tree kitchen. Of particular interest are the 3 bee boles, niches in the original redbrick wall into which straw skeps were placed to create bee hives.

Watch out for many different types of Bumblebees and Butterflies in the garden. There is a separate information leaflet on these species at reception with a handy identification guide to help you.

Exit right from the second walled garden near the greenhouse. Turn right through the Car Park and down to the starters hut, take the golf path to you left and up the incline through a mixed wooded area of beech, copper beech, lime tree and oak.

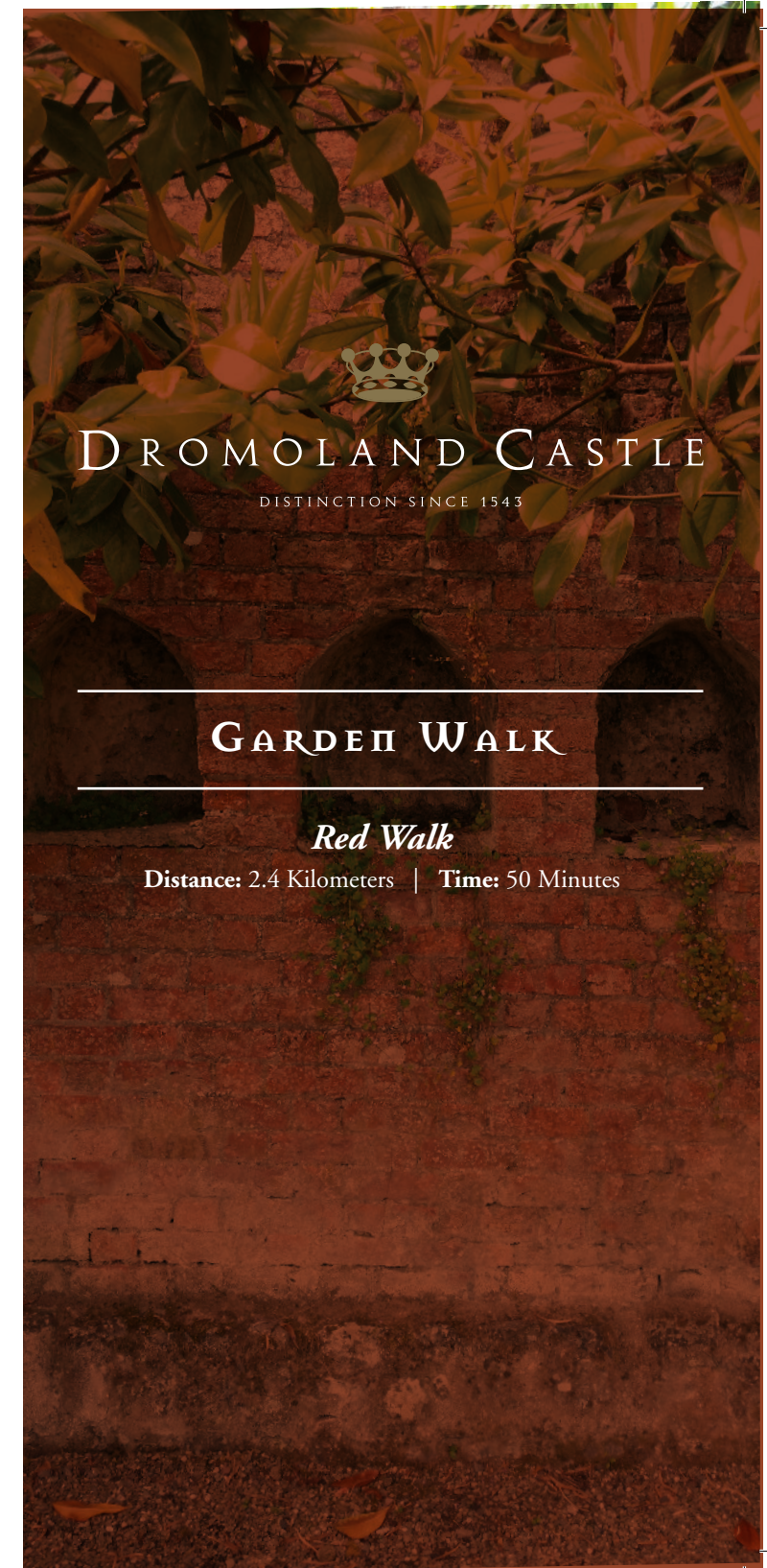


After 600 meters see houses of Orchard Wood on left and sign for 2nd Tee on right, note ferns and wildflowers on your right hand side. Keep sharp left to edge of woodland. Follow track through woodland with the 2nd tee netting on your left and wildflowers along the grassy verge on your right. The woods in springtime are full of primroses, violets, bluebells, buttercups and unfurling ferns. Continue downhill to emerge on main estate road. Note the large Oak tree at this point and Dromoland Lake in front of you. The lake covers 24 acres and is 90ft deep in the middle. It is home to our resident mute swans and many other birds including coot, moor hen, mallard duck, grey heron, pied wagtail, reed bunting and willow warbler. Turn right, continue along the grass verge by the side of the tared road at side of lake back to Hotel and start of Lime Avenue and Statue of Mercury on your left.



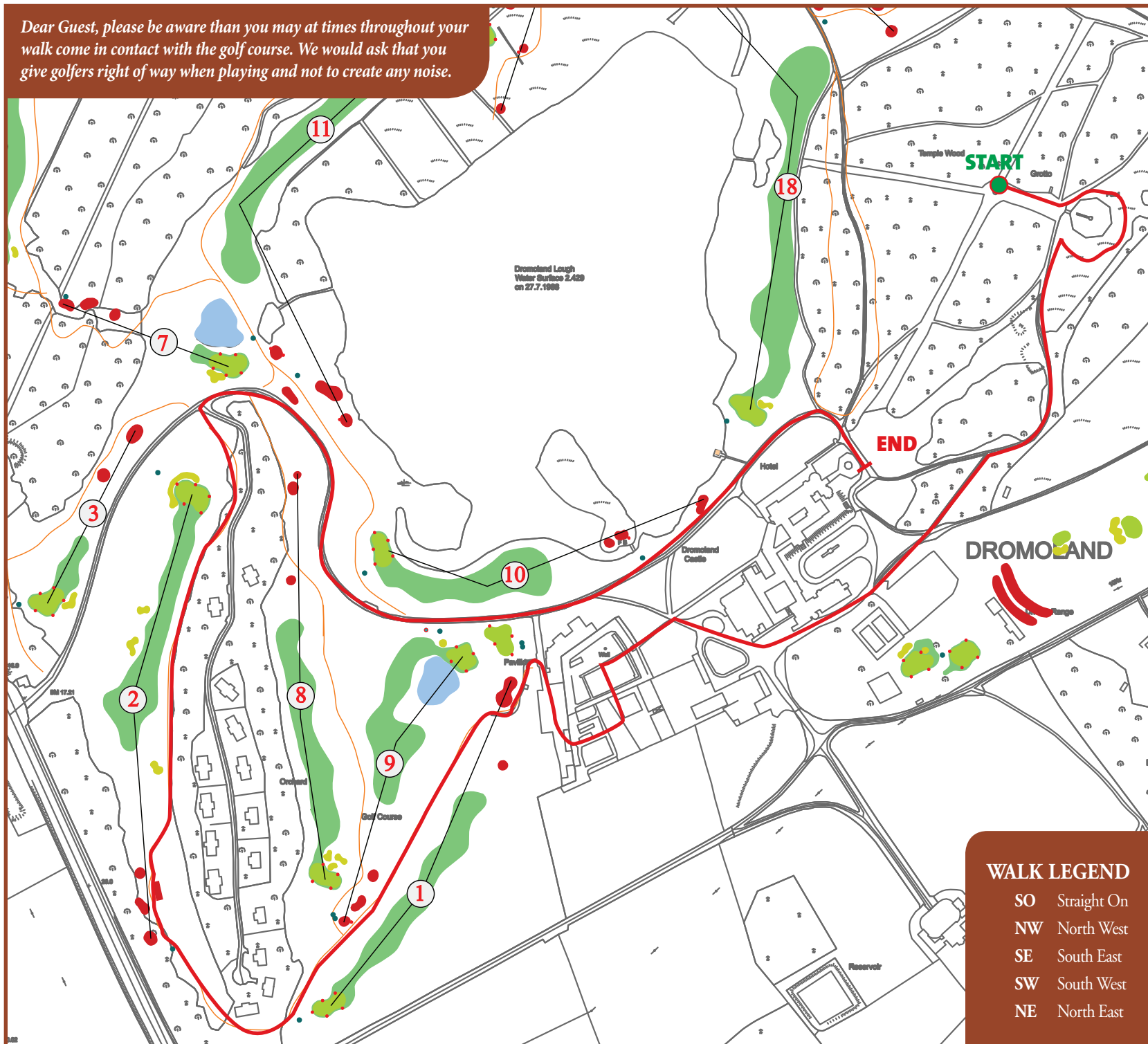
The woods hold Red Squirrels one of Ireland's much loved mammals. Watch out for their amazing agility as they move from tree to tree high up in the leaf canopy. There are many fine tree specimens on this walk; Beech, Oak and Willow. Ladybirds inhabit the woodland floor feeding on aphids on Nettle and Briar.

End of walk.





Dear Guest, please be aware than you may at times throughout your walk come in contact with the golf course. We would ask that you give golfers right of way when playing and not to create any noise.



## GARDEN WALK

### Red Walk

Distance: 2.4 Kilometers

Time: 50 Minutes

From the Statue of Mercury take the SE direction down the Yew Walk past the Hermit's Grotto to the Lily Pond. Walk clockwise round the hexagonal pond, from this vantage point there is a good view back to the Statue of Mercury. The Lily Pond with its white water lilies is edged in Liscannor flagstones and the central walkway of the pond is of the same slate.



After circumnavigating the pond turn left onto track for 300 meters then bear left at a Y junction to a sealed road and straight on to the hotel carpark, facing you at the entrance to the carpark are two fine larch trees, larch is the only deciduous fir in Ireland.

Continue SO, you have the original moat wall on your right hand side and Cedar of Lebanon trees up on the high ground to the left. Ahead you can see the gardeners red brick house on the hill. Keeping the Dromoland Shop on your left enter the Walled Garden(see sign) via a Hornbeam pergola and through the Lemeneagh Gate.



In 1908 Lord Inchiquin had the doorway removed from the ruins of Lemeneagh Castle and transported by horse drawn means to be re-erected in Dromoland.

### WALK LEGEND

- SO Straight On
- NW North West
- SE South East
- SW South West
- NE North East